

NEWSLETTER



Holderness Historical Society

Fall 2017

Volume XXXV

2017 OFFICERS

Linda Foerderer
President

Susan Kemp
Vice President

Missy Mason
Treasurer

Cynthia Murray
Secretary

DIRECTORS

Lynn Durham
Dodie Greenwood
Ron Huntoon
Mary Elizabeth Nielsen
Patty Sue Salvador
Tink Taylor



*Wishing You a
Joyous Holiday
Season!*

Route 3 * Curry Place
Post Office Box 319
Holderness, NH 03245
www.holdernesshistoricalsociety.org

Having a wonderful time. Wish you were here!

The latest addition to our website, holdernesshistoricalsociety.org is Peter Francesco's collection of nearly 300 Squam area postcards. Starting in 1975 when he was cleaning out the family store located where Walter's Basin is now, Peter has been acquiring local postcards. The store had been there since the 1920s operated first by his grandparents, Frank and Mary, then by Mary with her brother John Romani and finally by Louie, Peter's father. The State bought and demolished the store when they were modernizing the bridge. Intrigued by the postcards he had found, Peter found others at antique shops, postcard shows and, more recently, on E-bay. He continues to look but no longer buys black and white cards and won't spend more than \$10 unless it is a very special scene he does not already have.



Francesco postcard of John Romani in front of store

Postcards were probably not available to our earliest tourists. Some lengthy letters extolling our scenery exist. Visitors started flocking here in the 1870s. Railroads brought them to Meredith and Ashland. They could continue on by horse and buggy, then by steamboat out of Ashland and later by automobile. Farms took in summer guests. Boys came to camps like Asquam and Chocorua; girls came to the Summer School of Music. The grand hotels were built: Asquam on Shepard Hill in 1881, Mt. Livermore Hotel at the foot of Mt. Livermore in 1883 and the Central House, later known as the Holderness Inn, in 1892. Rockywold began in 1897; The Hillside Inn (now Squam Lake Inn) in 1897 as well.

At the turn of the 1900s, local merchants began to have cards made up. These cards illustrate our history. Early cards still show fields in the lake and mountain views. They show the wooden launches which are now classics. There are old-fashioned autos as well. Sharp-eyed viewers will see pages of a brochure touting the Mt. Livermore Hotel in sections 46 to 49.

Views of the town show a changing waterfront and garages adjoining the bridge. Peter's rarest card is of the September 1906 fire which destroyed buildings west of the bridge.

Later cards show the cottage colonies like Perkins Cabins, Little Holland and Vinga Court. Motels like Yankee Trail, the White Oak, the Boulders and Black Horse (now Cottage Place) followed.

There are cards of the library (1911) and the three churches: St. Peters in the Mount (1888), now a private home, Sacred Heart, now Little Church Theater and the Freewill Baptist Church (1896), now the Community Church. Holderness School and Trinity Chapel also appear.

Continued, page 3

The President's Corner

This summer, partnered with the Holderness Library, we presented three well-attended programs. The schedule for 2018 programs will be listed in the spring newsletter.

This summer the museum had a special exhibit titled *School Days*, which featured pictures of Holderness schools of yesterday, class pictures and artifacts from the era of one room school houses. The end of July and August a very special exhibit of paintings and artifacts of Helen Nicolay was held thanks to the generosity of our director, Patty Sue Salvador. On July 15th a fundraiser benefiting the Historical Society and the Library was held at Tannenruh, the former home of Helen Nicolay and her father, John Nicolay, thanks to the generosity of the current owners, Kathryn and Mitchell Drew.

Cataloging of our books and pamphlets in our research/library area to make researching families, cemeteries, camps, and other historical events and places simpler continues. Please check our website www.holdernesshistoricalsociety.org for programs, exhibits, museum hours, etc.

Your continued support by way of membership dues and contributions helps preserve our town's history and maintain our building, which received a new roof this past summer. If you have not yet renewed your membership, please use the enclosed envelope to do so. We hope that more of our members will become more active in the historical society. We always welcome your ideas, help, and suggestions. Please contact me, or any other member of the board, if you can help or for more information.

Linda Foerderer

FPLinda@aol.com

(603) 968-7487

Keep up the Good Work!

Squam Boat Livery, Inc.

PO Box 159
Holderness, NH 03245

Sally & Tom Daigneault
(603) 968-7721



Lynn Durham

& Associates

Integrity, experience, and joy!

kW COASTAL AND
LAKES & MOUNTAINS
KELLERWILLIAMS REALTY

66 Route 25, Suite 1
Meredith, NH 03253
Office: 603-569-HOME

603-926-9700

Lynn@SquamLakesNH.com
NH Real Estate Broker over 30 Years
Multi-million dollar seller

www.LakesandMountainsRealty.com

Treasurer's Report

Thanks to donations of all sizes, we were able to replace our roof for \$8100 in late June. Many thanks to those who helped us reach the goal!

Our Helen Nicolay House and Studio Tour was July 16. Kathryn and Mitchell Drew allowed us to use their Shepard Hill home once owned by Helen Nicolay for a fundraiser. Board member Patty Sue Salvador lent us her collection of Nicolay's paintings. Helen was the daughter of John Nicolay, Lincoln's secretary, who had the house built in 1896. She spent summers here till the 1950s. Salvador's sister Anne Marie Maguire and nephew John Maguire recently published their book Lincoln's Secretary's Secretary. The profit on the event was split with the Library.

Through the Celebration Committee, we raised enough money from local businesses and residents to pay for Labor Day weekend fireworks. The Science Center volunteered a boat, the Baker Valley Band volunteered its services and Squam Docks provided a barge for staging of the fireworks. Our thanks to all who contributed to the beautiful but chilly evening!

M. Mason



A Visit to Tannenruh

With the wonderful support of the Holderness community, the Holderness Historical Society and the Holderness Free Library's Fundraiser, "*A Visit to Tannenruh*" was a sold out success.

The event was held at the former home of John Nicolay, Abraham Lincoln's personal secretary during the Civil War and his daughter, Helen, artist and author, thanks to the generosity of the current owners, Kathryn and Mitchell Drew.

Nicolay art and artifacts were displayed and there was a presentation by John Maguire on his and his mother, Ann Marie Maguire's recently published book, "*Lincoln's Secretary's Secretary*." Diane Downing, of the Common Man Family of Restaurants, supplied wine and cheese platters.

The display continued during July and August at HHS. Other Nicolay inspired events were held at the Squam Lakes Science Center, The Fells and Holderness School thanks to the planning, enthusiasm and hard work of Suzanne Lee, of the Lakes Gallery and her husband, Terry.

Special thanks to Susan Warren and Brick Moltz of the Fells, Will Lehmann of Will Lehmann Frames, Franz Nicolay of Holderness School, Carol LaVelle, Darrel Gutzler, Linda Foerderer, Missy Mason, Lynn Durham, Dodie Greenwood, Cynthia Murray, Susan Kemp, Tink Taylor, Ron Huntoon and Jackie Heath.

Patty Sue Salvador



MAIN ST., HOLDERNESS, N. H.

Main Street, Holderness, NH



1880. Perkins' Boat Livery, Holderness, N. H.

1880 Perkins Boat Livery, Holderness, NH (site of present day Squam Boat Livery)

Many youth camps brought children and their parents to town. The Science Center opened in 1966. "On Golden Pond," which came out in 1981, brought more tourists. And tourists continue to gather here today. The Eaton boathouse at the end of the channel as you enter Big Squam, the view from Rattlesnake; tourists still enjoy these familiar views. Even though the price of postage has gone from 2 cents to 34 cents, cards still sell and show the world our lakes and mountains.

The Franciscos have been in Holderness, Ashland and Plymouth since about 1910. Peter's father, Louie, known for his steamboat "Halcyon," claimed to have been born at the store in 1919. Their store ran for more than 50 years. Louie himself ran the town bowling alley, Lake View Lanes until 1980. Peter is a local realtor

and selectman. We thank him for sharing his collection.

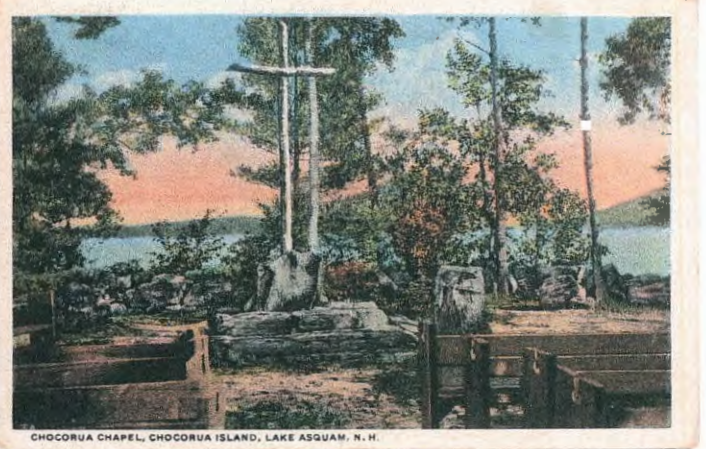
Missy Mason



Entrance to Big Squam Lake, N. H.

Entrance to Big Squam Lake, NH

Eaton Boathouse



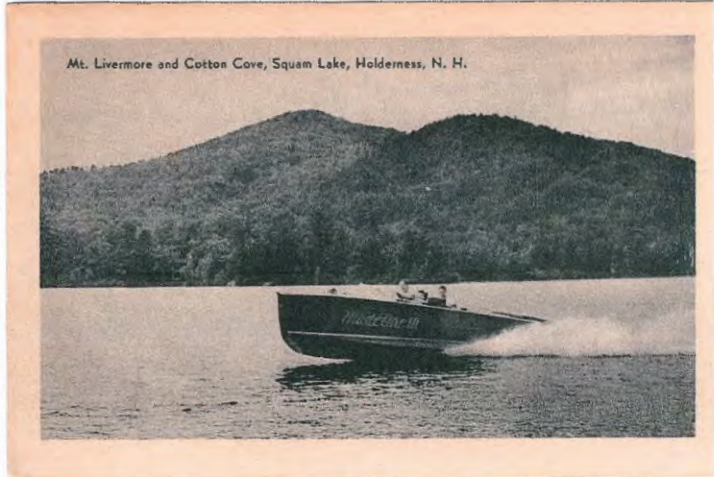
CHOCORUA CHAPEL, CHOCORUA ISLAND, LAKE ASQUAM, N. H.

Chocorua Chapel, Chocorua Island (Church Island), Lake Asquam, NH



FIRE SCENE AT HOLDERNESS, N. H. SEPTEMBER 1906

Fire Scene at Holderness, NH September 1906



Mt. Livermore and Cotton Cove, Squam Lake, Holderness, N. H.

Mt. Livermore and Cotton Cove, Squam Lake. Holderness, NH



- ▶ SMART
- ▶ FRIENDLY
- ▶ SERVICE

DAN "BIRD" UHLMAN
General Manager

20 West Street (Exit 24, I-93)

Office: 603-968-7626 1-800-649-2076

duhlman@belletetes.com

Ashland, NH 03217

Fax: 603-968-3665

www.belletetes.com



SINGING EAGLE LODGE

Two weeks in August
on Squam Lake

in the White Mountains

A camp for girls ages 8-16

Hiking, land and water sports,
and the arts.

www.singingeaglelodge.org

"An investment in

knowledge pays the best interest."

— Benjamin Franklin

Education is what allows us to dream bigger dreams,
complete more journeys and engage with the world
more fully. Embrace it with passion and conviction.



800.922.6872 mvsb.com



Northern Lakes Veterinary Hospital

L.L.C.

Large, Small & Exotic Animal Care

(603) 968-9710

83 Depot Street • Ashland, New Hampshire 03217



NFP® Benefits
Insurance
Wealth Management

Sherry Norman, AAI
Account Executive
NFP Property & Casualty

PO Box 370
Plymouth, NH 03264

P 603.536.2100

F 603.536.5018

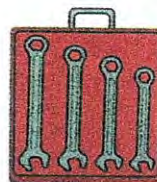
C 603.254.4703

sherry.norman@nfp.com

www.nfp.com/poulos

Currier & Sons Garage, LLC

Richard D. Currier
William L. Currier



262 NH Rte 175
Holderness, NH 03245

603-968-3107
603-968-7015 Fax
curriersgarage@aol.com

Holderness Harbor

We Rent:

*Slips, Boats, Canoes
Kayaks and Paddle Boards*

603-968-9001

www.holdernessharbor.com

879 US Route 3
Holderness, NH 03245



K-MAC

Professional

Home Builders, Inc.

Kevin McBournie
General Contractor

603-968-9339

Fax 603-968-3061

k-mac@roadrunner.com

Annie's

OVERFLOW RESTAURANT

BREAKFAST & LUNCH

Daily Specials

OPEN 7 DAYS A WEEK

6:00 A.M. – 2:00 P.M.

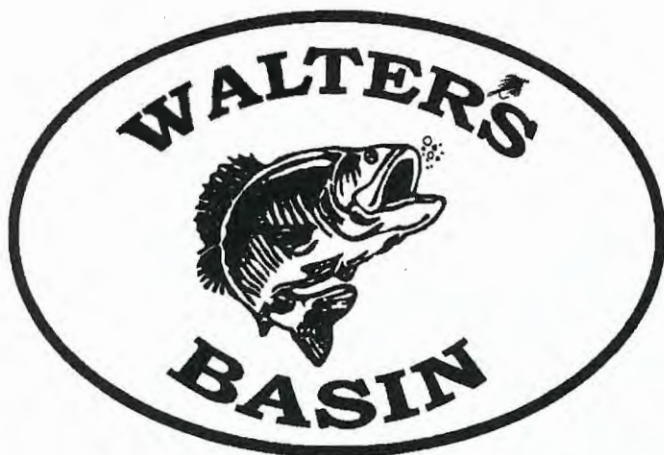
138 Holderness Road - 536-4062

BARRY GAW, LEED AP, CGP
MANAGING MEMBER

SIPPICAN PARTNERS
CONSTRUCTION • MANAGEMENT

o 603.968.7711
c 603.553.0258

bgaw@sippicanpartners.com
www.sippicanpartners.com



STAY • SHOP • DINE

Stay with us



RELAX, ENJOY, AND REJUVENATE!

our inn has been awarded the certificate of excellence by trip advisor!

**RESERVE ONLINE OR GIVE US A CALL:
WWW.SQUAMLAKEINN.COM / 603.968.4417**

SHOP FOR QUALITY, ARTISAN, AND LOCAL PRODUCTS!

sandwiches, deli, grocery, bakery
prepared foods, wine, cheese, local & craft beers



**Located at the Intersection of:
Route 3 and Route 113 in Holderness Village
OPEN DAILY / SEASONAL HOURS / 603.968.8588**

Inn Kitchen + BAR



*Call for
Reservations!*

FEATURING...

local produce,
sustainable seafood,
indoor/outdoor dining,
and more!

**603.968.4417 / OPEN MAY-OCT.
Shepard Hill Road / Holderness Village**



A Reputation for Results!

Other Offices in:

Plymouth
Franconia
Littleton
Bretton Woods

Squam Lake Office
U.S. Rte 3, Curry Place
Holderness, NH 03245
603-968-7615

**LUXURY
PORTFOLIO**

LEADING
REAL ESTATE
COMPANIES
- THE WORLD



**R.J. Crowley
Moving & Storage**

Since 1963

**Moving people and businesses
to new adventures for over 50 years**

- Fully insured
- Local and long distance
- Estates, antiques and pianos
- Storage, shipping and receiving at our 30,000 square foot facility
- References on request
- Free estimates
- Full packing services

Local & Long Distance 603/536-1363

12 Hitchner Rd. • Plymouth, NH rjcmovers@myfairpoint.net

RUSTY RAKES MAINTENANCE

Landscaping
Snow Plowing • Sanding
Tree Work
General Property Maintenance

RUSSELL SARGENT

(603) 968-3620

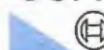


Specializing in Fine European Automobiles

Squam Lakes

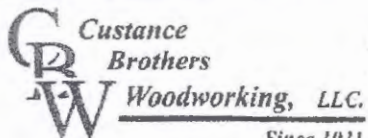
Automotive Services, LLC
Randy Currier, Owner

**BOSCH
Service**



886 Main Street, Route 3
Holderness, New Hampshire 03245
603-968-7001 603-968-7243 fax

www.squamlakesauto.com
Family Owned & Operated 40+ Years
email: info@squamlakesauto.com



"We pride ourselves in Quality Construction and Architectural Woodworking"

Steven W. Custance

www.custancebrothers.com
12 Hillside Ave., Ashland, NH 03217

Kitchens & Bath Design
Stock & Custom Cabinetry
Custom Doors & Windows
Architectural Millwork
Wood Turnings
Entertainment Centers
Staircases

(603) 968-9700
Fax (603) 968-9777

MegaPrint

INC.

Large Format Printing Specialists
www.megaprint.com

Holderness, NH
536-2900

SAMYN • D'ELIA

ARCHITECTS, P.A.

Ward D'Elia, AIA / Tom Samyn, AIA

Providing Municipal, Commercial, Hospitality, Resort and Residential Design Services in New Hampshire for over 20 years

Ashland, NH, 603.968.7133 / info@sdarchitects.com
portfolio on-line at: www.sdarchitects.com

Patty Stewart & Associates

35 Main Street
Plymouth, NH 03264

* Health, Life, Dental, Vision
And Disability Insurance

* Medicare Supplements

1-800-794-3690
603-536-3691 or Fax 603-536-3733
pattystewart@myfairpoint.net

Patti Thompson, Pam Baker and Patricia Stewart
owners



Squam Lake



GARY CRIPPS
Licensed Electrician
603/968-7515

P.O. Box 25
Holderness, N.H.
03245



Golden Pond Country Store

6 Shepard Hill Road
Holderness
968-3434



Rentals
Sales
Service
Storage
968-4411

Continuing the proud heritage
of boating on Squam



River Road off Rte. 3 • Ashland • to Holderness

A Floral Design Shop



47 Main Street
Ashland, NH
03217

Linda Paré

603-968-3059
800-221-3059



279-6166

ADRIAN

PAVING • EXCAVATING •
SITE WORK • SEPTIC SYSTEMS

P.O. BOX 157, HOLDERNESS, NH 03245



Barbara Currier
Kim Gould
Joan Clay
Clinton Clay
Anne Packard
Debbi Ward



(603) 968-7796
(603) 968-3299 fax
www.pineshoresllc.com

1116 Route 3
P.O. Box 185
Holderness, NH 03245

THANK YOU to Our Newsletter Sponsors!! These business cards represent local businesses supporting the Holderness Historical Society. PLEASE SUPPORT THEM!!

Need Gift Ideas?

Consider these items for sale at the Holderness Historical Society:

History of Holderness by George Hodges \$15

Abbreviated History of Holderness by Susan B. Keith & Margaret A. Howe \$3

A History of Public Schools in Holderness 1789-1949 by Doris Graton \$15

Around Squam Lake by Bruce Heald, Ph.D. \$15

Spring Sounds by Sid Lovett \$2

Fire Department Auxiliary Cookbook (originally published 1980) \$3

1903 Squam Lake Map suitable for framing 36x31 inches Plain paper \$35 Laminated \$40


Concord & Montreal RR Map of Squam Lake & Vicinity 20 1/4 x 15 1/2 inches \$15

Laminated Placemats with map of 1761 land division \$3

Benefiting Celebrate Holderness: Holderness 03245 T-shirts (50% polyester & 50 % cotton) Cream color adult M \$8
Navy & Gray child L \$8

Call 968-3334 (M. Mason) to order. You can pick up or items will be mailed to you (postage extra).

Local NH goods & great gifts at
Common Man Company Store in Ashland!



17 Restaurants Statewide
Uncommon On-site and Off-site Catering
Directions, menus, gift cards & C-Man Store online at theCman.com
Common Man Family 1.800.649.7031

FRESH MEAT & PRODUCE BEER & WINE
COMPLETE LINE OF GROCERIES



BOB'S SHURFINE MARKET

OPEN 7 DAYS A WEEK

MON-SAT 8 AM - 9 PM SUN 9 AM - 6 PM

MAIN STREET
ASHLAND, NH 03217

(603) 968-7781

Recent Gifts to HHS

Our thanks to the following donors of special objects for our collection:

--**Joanna Tuveson**: a leather-covered wooden casket with the initials of Sylvanus Weatherbee which dates from the early 1800s.

--**Gordie Potter**: Squam and New Hampshire postcards, Burleigh Dairy memorabilia, including a milk bottle, and a 1925 Dickinson map showing the view from W. Rattlesnake and location of various camps.

--**Fran and Tink Taylor**: chest of drawers, photos and Granite Monthly.

--**John Rich**: Native American artifacts given in memory of Anna Hussey/Camp Arcadie.

--**William Judkins**: two photos of Louis Francesco.

--**Patty Sue Salvador**: watercolor "Apple Trees, Holderness" painted by Helen Nicolay and a variety of books authored by Helen Nicolay.

Family History

JEWELL In 1831 Lydia and John Jewell built the house now owned by the Peoples just west of the Fire House. Their son Benjamin built the grand Livermore Towers Hotel on land just west of Willoughby Farm. The hotel beach is now the Town of Holderness beach. The main building burned in 1923 but several smaller buildings were in use till 1938. Recent visitor Laura Scherf is a Jewell descendant who came to look at photos of the hotel which recent generations of her family were unfamiliar with. We also showed her a map designating Livermore Cove as Jewell Cove.

DAVISON Science Center docents visited in August. The Science Center stands on land purchased from Ruby Davison, a granddaughter of James and Sophronia Piper. The Pipers farmed the land in the mid-1800s. A cellar hole in the woods off the Mt. Fayal Trail is all that remains of their homestead. The Pipers' daughter Betsy married John Davison who built the Holderness Inn on the property as well as Davison's Garage (now Squam Lake Automotive.) HHS has a guest register from the Inn which operated from 1896 to the 1950s. The Inn, which adjoins Kirkwood Gardens, is now used as an art gallery.

Membership Report

As winter approaches, we would like to take this opportunity to thank you for your continued support and ask that you renew your membership. You do not have to live in Holderness to be a member. Please return the enclosed envelope with a check payable to the Holderness Historical Society.

Individual membership is \$15 and family membership is \$25.

Thank You!
Cynthia Murray

The Last House in "The Hollow" - Holderness

This title depicts a summer-long archaeological survey done on the river's edge along the east side of the Pemigewasset just below Livermore Falls where, it has been learned, there was once a thriving mill community lasting well into the 1930s. In fact, one Holderness resident, Abby Brown Frizzell who was raised there, has been able to recall firsthand what life was like in "The Hollow."

State archaeologist David Trubey, part of the investigative team examining the site, noted from artifacts recovered by digging test pits, that the former mill village complete with company housing, a school, store and more, dated back to 1769 starting with grist and fulling mills owned by Moses Little. Hand wrought nails were found dating to pre-1830 along with a clay pipe made in Glasgow, buttons and tools. Buried evidence verified much of the industry that followed.

With the assistance of old photographs from the Campton Historical Society, the state's Division of Historical Resources has been able to reconstruct what life was like there. Trubey presented his findings before a meeting of Friends of the Pemi/Livermore Chapter on October 25, 2017 at the Campton town office.

In 1877, over worries that Atlantic salmon were being blocked by dams down river, the state's first fish hatchery was constructed at Livermore Falls. Then came Arthur Homans' pulp mill in 1888. Researchers could determine from layers of ash they noted around old cellar holes that fires destroyed more than one structure. Just across the river the J.E. Henry pulp mill went into operation in 1901 operating there until 1953. Logs were floated down the river from the northern forest, beaten into pulp, baked and returned to Lincoln by rail for processing into bond quality paper.

Archaeologists wondered where "The Hollow" residents got their drinking water. No sign of any wells. Ms. Frizzell was able to recall a nearby spring. Company housing for mill employees went for \$8 a month with firewood provided but no running water or electricity.

In 1992 the State Department of Resources and Economic Development purchased Livermore Falls for its eventual conversion as New Hampshire's newest park making both sides of the Pemi more visitor friendly. Parking has been on the east or Holderness side but a little over an acre is being purchased at the Plymouth/Campton town line to facilitate parking on the west side along Route 3.

Plans are to return to the site next summer to expand upon what is already known about "The Hollow" and to reach further back into history - thousands of years in fact - to determine the extent of Native occupation where surely there must have been extensive fishing underway.

Tink Taylor

In Memoriam

"Red" Murray, husband of our Board member and Secretary Cynthia Murray died in August.

Ernie Currier, brother of HHS supporter Annie Currier, died in the Spring.


Jacqueline Marden who served as Board member and President of HHS and was a champion baker for our events died in September.

Gene Ross former Superintendent of Schools in Manchester and Goffstown and a longtime HHS member died October 12 in Florida. He generously gave to our building and flowers on the bridge funds even after the death of his wife Connie who was a mainstay of the Historical Society.

Jeffrey R. Greason died on October 20. He is the son of Liz and Stephen Greason longtime members of HHS who are largely responsible for *Flowers on the Bridge*.


Lois Stratton long time supporter and summer resident of White Oak Pond died in November.

Mary Currier former resident and longtime HHS member died November 19.



COTTAGE PLACE

on Squam Lake



Swim Like Stay

Lodging • Special Events • Gift Shop

www.cottageplaceonsquam.com
1132 US Route 3 Holderness, NH 03245
cottageplace@gmail.com
603.968.7116

SQUAM LAKES FINANCIAL

ADVISORS, LLC

Business/Personal
Financial Planning

Member of
*The National Association of Personal
Financial Advisors*

Robert E. Maloney, MSFS AEP
Chief Listener

PO Box 730
31 Cuxboro Road
Holderness, NH 03245
603-968-2317
603-947-6111 Fax
bob@squamlakesfinancial.com



HOLDERNESS FREE LIBRARY

866 U.S. Route 3
Holderness, NH 03245
(603) 968-7066
www.holdernesslibrary.org
Mon 9-5 Tues 9-4 Wed 9-7
Fri 9-4 Sat 9-1

Watch for our map exhibit next summer!

